

Climate and Biodiversity Action Workshop

Bernadette Guest, Heritage Officer



Comhairle Cathrach & Contae Phort Láirge
Waterford City & County Council

Setting the Scene

31 Local Authorities, 27 Heritage Officers

(None in Wexford or Carlow, vacancies to be filled in Fingal and Dun Laoghaire Rathdown)

6 Biodiversity Officers- Dublin City, Dun Laoghaire, Fingal, Kerry, Wexford, Galway

29 Heritage Plans, 25-29 active Heritage Fora

14 Biodiversity Plans

31 local authority Climate Change Adaptation Strategies with extensive objectives for Biodiversity.

Project Funding & Awareness Raising

- Heritage Plan
- Biodiversity Plan
- INTERREG
- LEADER
- FLAG
- Creative Ireland
- Water and Communities Fund
- Town & Village Renewal
- Outdoor Recreation
- Community Foundation Ireland
- World Wetlands Day
- Biodiversity Week
- Heritage Week
- -Wild Child Day
- - Water Heritage Day

Role of Local Authorities

Policy- Development Plan, Local Economic & Community Plan, Climate Change Adaptation Plan, Heritage Plan, Biodiversity Plan.

Strategic Policy Committees

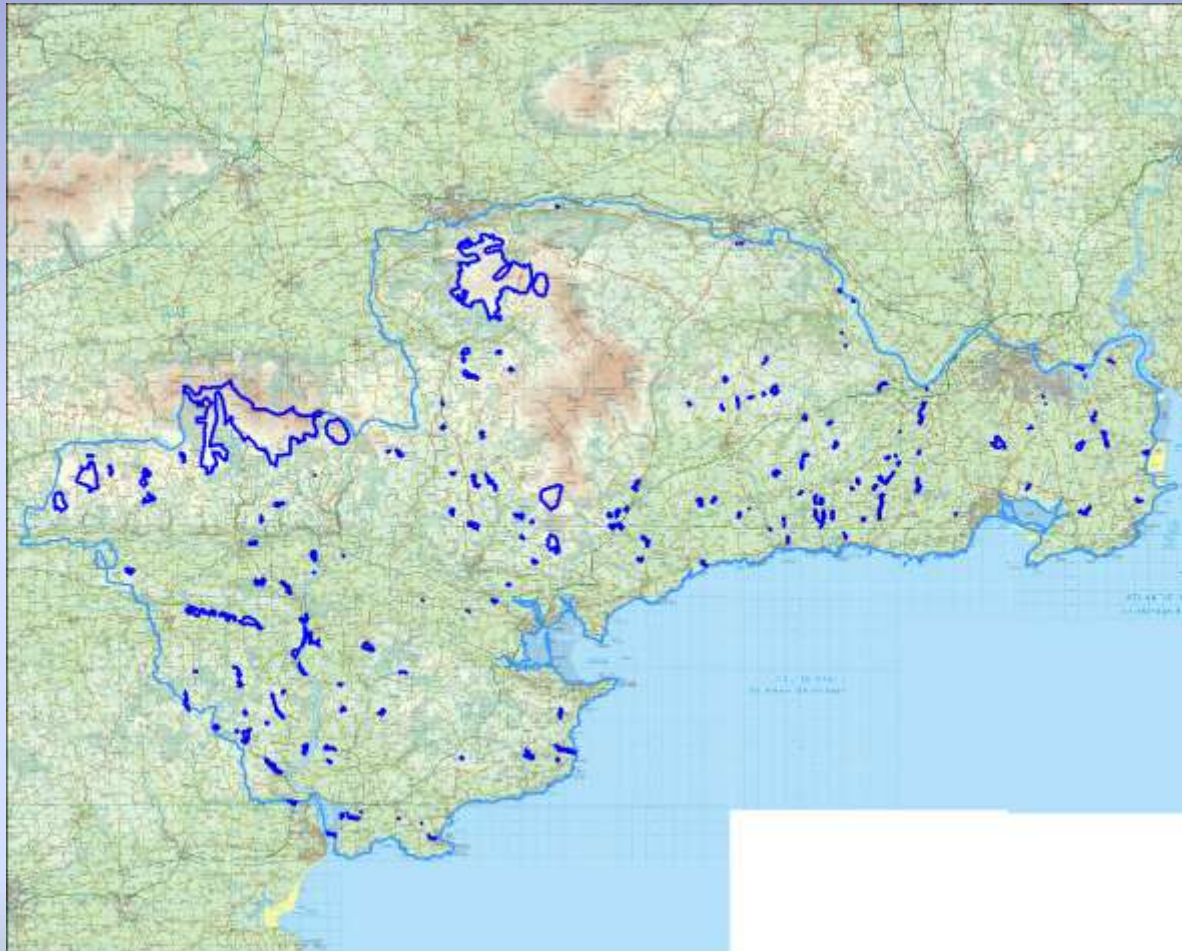
Projects- Within framework of above plans

Work Practices- Incorporation of biodiversity and climate proof measures

National Policy to Development Plan Policy

- National Landscape Strategy 2015-2025
- National Biodiversity Plan 2017
- WFD & River Basin Management Plan 2018-2021
- Climate Change Adaptation Strategy
- Climate Change- A Cross-Party Consensus for Actions 2019
- Green Infrastructure Strategy
- Inclusion of objectives to support DHPLG guidelines and measures for restoration.
- Addition of 35 wetland sites and application of GZT for adaptation measures.

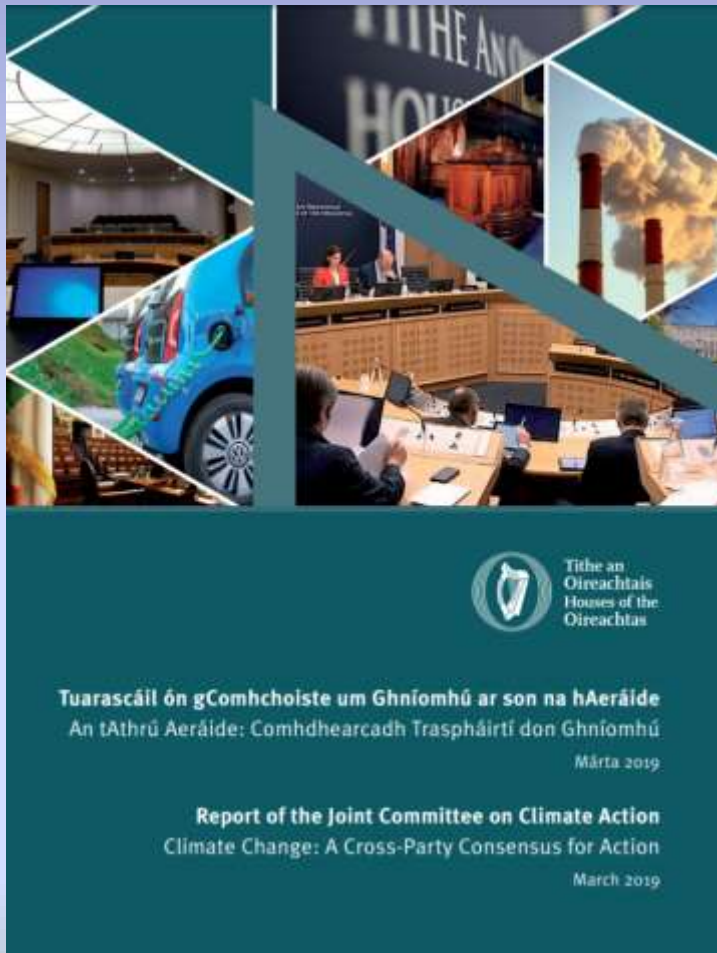
Wetlands of local biodiversity importance in Waterford
-21 listed in current Development Plan &
proposed addition of 35 sites in new Dev. Plan



Habitat loss of wetland type pNHAs in Waterford

- The total area of 10 wetland pNHAs is approximately 636 ha.
- 4.5% of the entire area of these pNHAs has had its wetland habitat infilled or drained in a 20 year period.
- Of the 21 Local Biodiversity Sites listed in the Co. Development Plan 4% of the total area of 552.335 ha has been damaged or destroyed in the same period.

Climate Change- A Cross Party Consensus for Action 2019



- National review of landuse should include adaptation cobenefits such as wetlands to mitigate flooding risks in river catchments.
- Such a review should inform new round of CAP which will see an increase in env. payments- 40% to be directed at climate & environmental measures.

Opportunities- Green Infrastructure Strategy

- Identifying the resource- habitat cover, ecological connectivity, areas of value for biodiversity & carbon capture, wetland catchments- groundwater recharge, promotion of SuDS.
- Floodplain Management -Benefitting lands, sacrificial lands for floodplains in flood management.
- Zoning type in Development Plan that identifies this value.

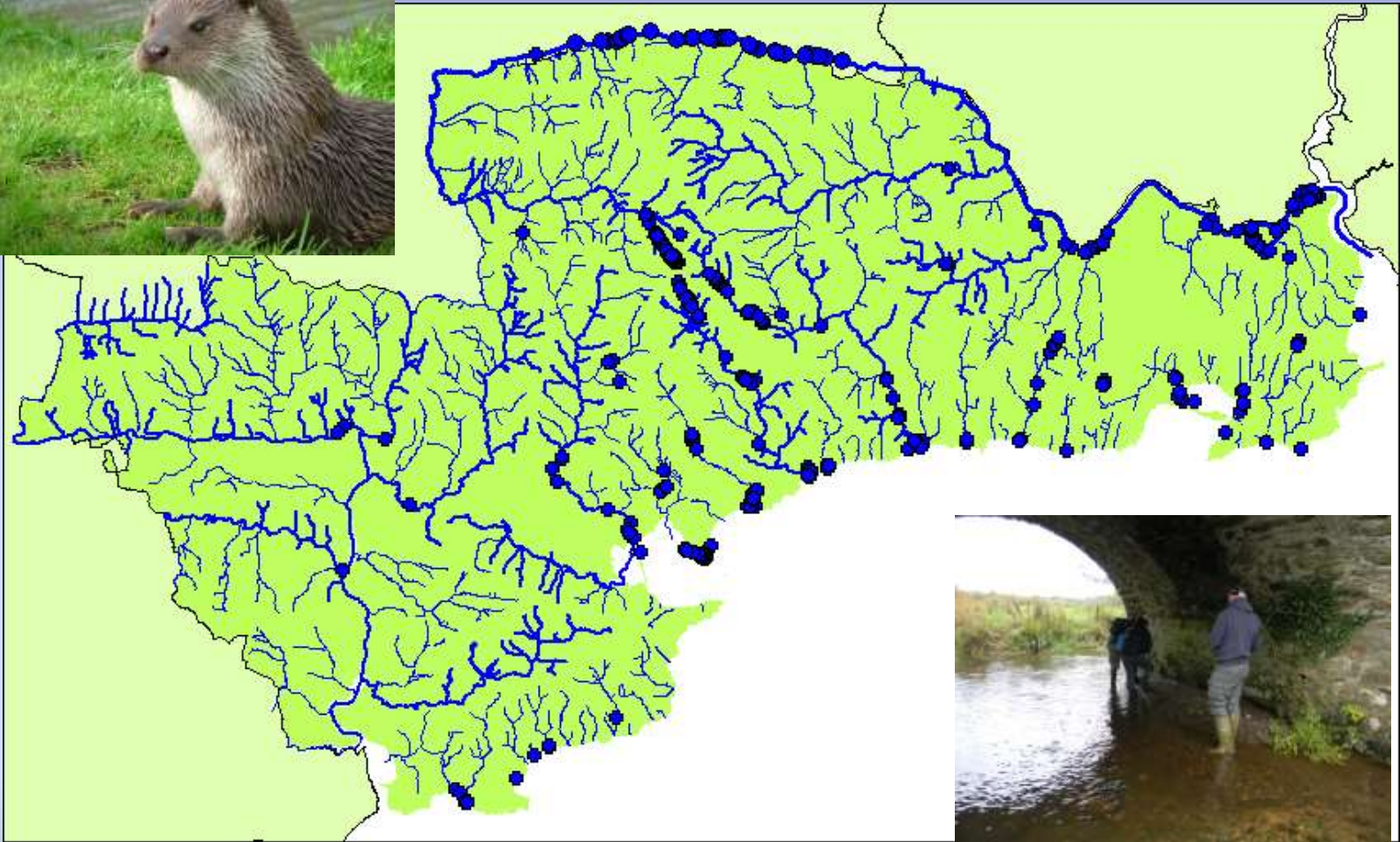
Biodiversity Plans- sample actions

- Promote and support community engagement with natural heritage through local habitat management projects, citizen science and natural heritage event programming at public events including festivals.
- Support implementation of the National Biodiversity Plan at a local level and promote policy and practice in ecosystems services and natural capital.

River Clodiagh FPM Project



MISE Otter Survey 2011-2015





Habitat Mapping of River Suir



Benefits

- Filling in habitat data gaps, monitoring change e.g. Loss of wetland habitats- marsh, reedswamp, wet grassland- becoming a less common habitat.
- Informing proposals on Blueways , highlighting sensitive habitat areas.
- Informs planning assessment process from infilling of wetlands to dairy and housing applications.



DONATE

burrenbeo trust
connecting people and place



Clare Community Biodiversity Plans

THE BURREN THE TRUST OUR WORK SUPPORT US LATEST SHOP

Learning Events Active Conservation Research Advocacy

In 2019, Clare Local Development Company contracted the Burrenbeo Trust to facilitate Community Biodiversity Training for 15 communities in Co. Clare. We adapted a community-led approach to the training so that communities could work together to create a biodiversity plan that was based on the principles and priorities of the people who lived locally. As a result of this training, the following community action plans were developed by the communities in Co.Clare to protect and enhance nature and wildlife in their areas:

[Ballynacally Biodiversity Plan](#)

[Kilkee Biodiversity Plan](#)

[Ballyvaughan Biodiversity Plan](#)

[Kilkishen Biodiversity Plan](#)

[Connolly Biodiversity Plan](#)

[Kilmihil Biodiversity Plan](#)

[Doonbeg Biodiversity Plan](#)

[Lisdoonvarna Biodiversity Plan](#)

[Broadford Natural Heritage Plan](#)

[Miltown Malbay Biodiversity Plan](#)

Work Practices

- Pollinator Framework agreement- ensuring practice on the ground matches approved policy.
- Communication within local authority depts.
 - SDCC wetland infill case.
- Designing in biodiversity considerations at start of projects, early planning, mitigation & compensation measures.
- Early consultation and required consents for projects – IFI, NPWS (Activities Requiring Consent), Planning (Appropriate Assessment)



Emergency repairs & timing of works



Siltation of Rivers & Bridge Maintenance

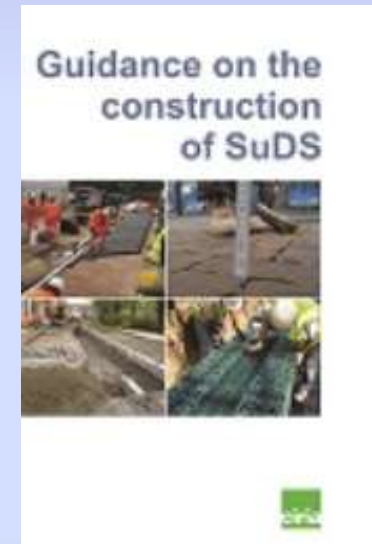


Constraints & Opportunities

- Resources- wide remit of Heritage Officer, HOs may not have ecological expertise.
- BAP Funding has been re-established and 2-3 year planning is welcome but need personnel to manage projects.
- Collaboration on a regional/national level is most effective e.g. Tidy Towns Pollinator Award, Swift Project.
- Supporting local communities and encouraging their involvement in LEADER Biodiversity Training, CFI Biodiversity projects, Tidy Towns Pollinator awards etc.
- Essential to support existing initiatives e.g. the RBMP and work of LAWPRO. Emerging river trusts and harbour partnerships. Good water quality leads to good quality biodiversity.
- Supporting Farming & Nature Awards

Opportunities

- Strengthen Heritage Services in LAs with Biodiversity Officers.
- SPCs can support stronger protection for local biodiversity in Development Plans e.g. Sites of local biodiversity interest, protection of ecological corridors (Article 10 of Habitats Directive)- small wetlands and townland boundary hedgerows- the stepping stones between the Natura 2000 Network.
- SPCs can advocate for robust and comprehensive Green Infrastructure Strategies to be prepared as part of the Dev Plan Process.
- SPCs can advocate for more robust policies on SuDS in Development Plans.
- Support of habitat mapping in a catchment basis.



Discussion

Promoting the development of policies and actions at the Local Authority level that will respond to the Climate and Biodiversity Emergencies.

- What can your local authority do to respond to this emergency ?
- What proactive measures can your Council take to reverse the collapse in Biodiversity locally?

Thank You