

## Overview of the three PPN colleges

PPN membership is organised into three areas, or colleges: Environment, Social Inclusion, Community and Voluntary. When a group joins the PPN they choose the college that best suits their area of concern.

### Environment

PPNs provide the ability for driving local climate and biodiversity action. They give the ability to progress local and national climate and biodiversity action plans, and to co-ordinate action locally. PPNs allow the community to be a voice for nature and the environment that is driven by local knowledge and interests. The biodiversity crisis and the climate crisis are interlinked, and need an interlinked method to solve them. The PPNs are a powerful player in creating and enacting solutions to these crises.



### Social Inclusion

The PPNs are a place where the voices and views of those who are furthest behind first can be brought to the fore. They offer opportunities to leave no one behind. PPNs assist groups such as disability, traveller, migrant, age action groups and many others through the processes involved in having their voice heard in local council decisions.



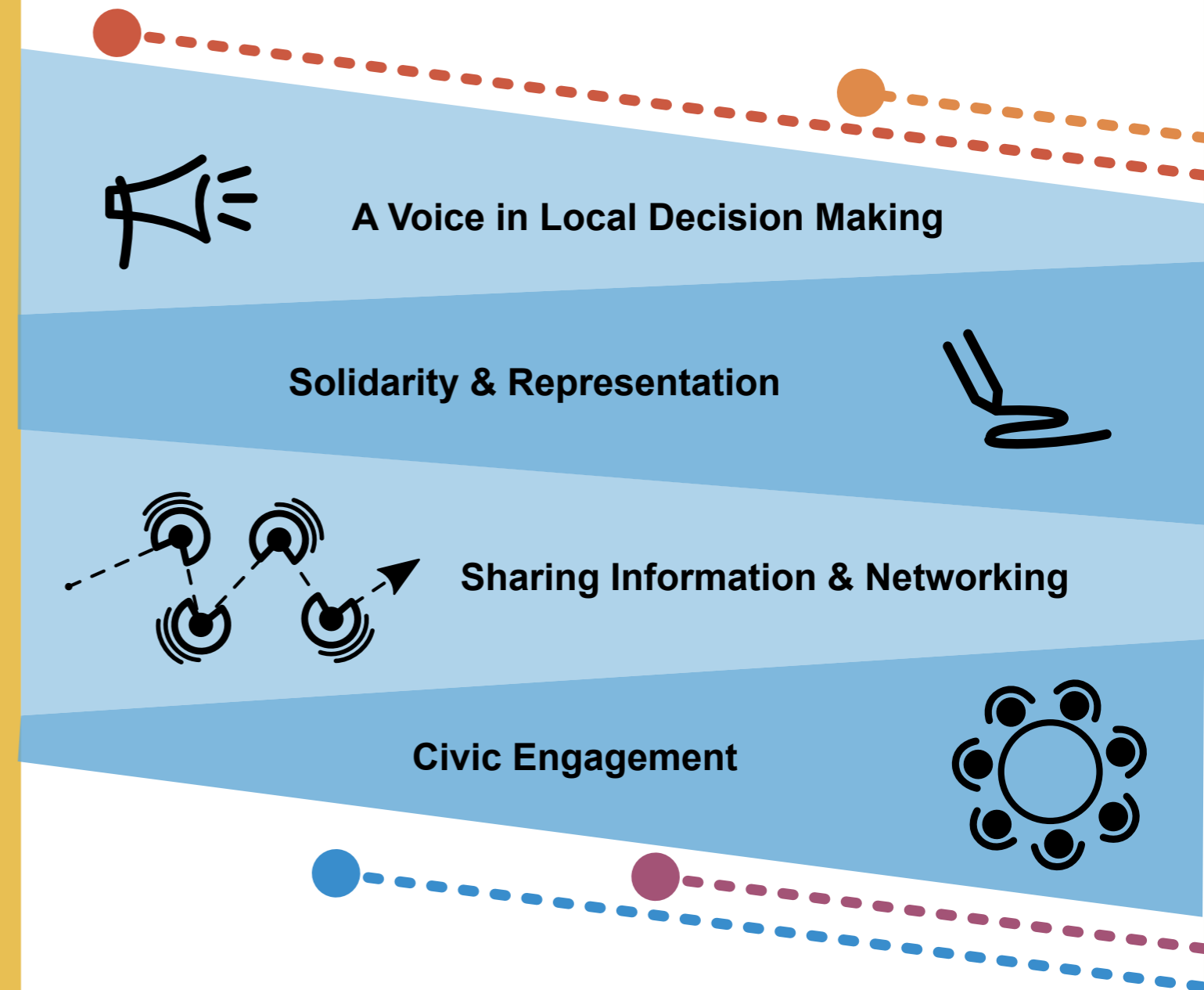
### Community and Voluntary

PPNs offer community and voluntary groups the ability to participate in local democracy, and help create social cohesion. The PPNs create solutions to problems, solutions that are already supported by the community, and provided to the council. The PPNs are made up of groups of active people in the community who are already engaged, who know what is needed for their locality, and who put in many hours of voluntary time to improve their county.



Find your PPN: [www.LEN.ie](http://www.LEN.ie)

## Public Participation Network (PPN) in your County



**Environmental  
Pillar**

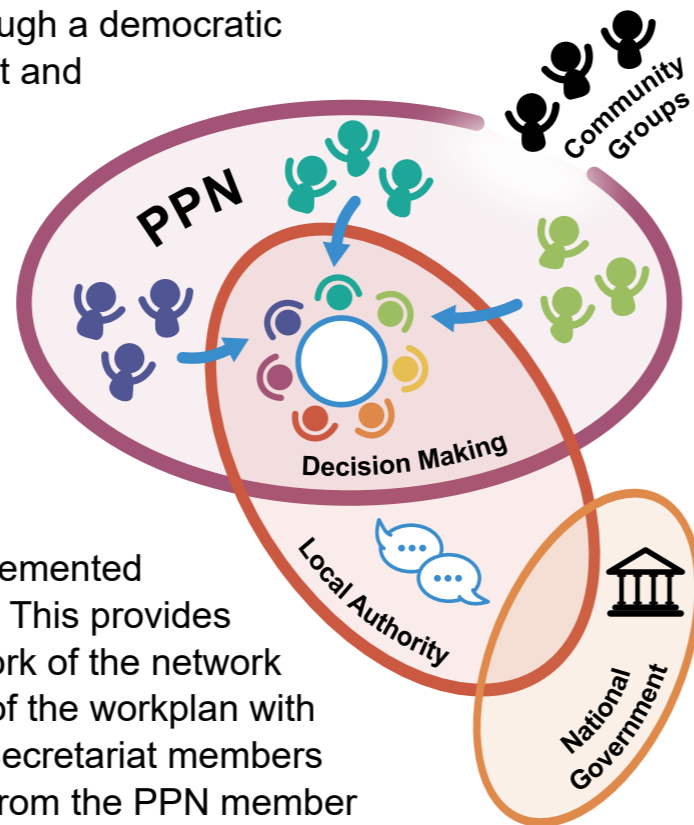
Working for a sustainable future

## What is a PPN?

Public Participation Networks (PPNs) are government funded structures set up in each Local Authority area. They enable the public to take an active formal role in relevant policy making and oversight committees of the Local Authority. The PPNs are a mutually beneficial network of community, environment, and social inclusion groups, who work together to create resilient communities through a democratic method. Community members meet and collaborate through the PPN, and achieve great outcomes by doing so.

## How the PPNs are organised

The Department of Rural and Community Development provides funding to every PPN. This is supplemented by funding from the Local Authority. This provides for paid staff who coordinate the work of the network by overseeing the implementation of the workplan with direction from its Secretariat. The Secretariat members are volunteers and are nominated from the PPN member groups. Other PPN Representatives also volunteer their time and expertise, including those nominated to Local Authority committees, such as Strategic Policy Committees, Local Community Development Committees, LEADER companies, and Joint Policing Committees. Councillors can engage with PPN members at the Local Authority committees, or outside of these through formal or informal networking opportunities hosted by the PPN or Local Authority.



## How you can work with community groups and the PPNs

Members of Dáil Éireann can work with PPNs by engaging with the PPN member groups, or directly with the PPN Representatives. Every PPN has a dedicated website and staff. Get in touch with the PPN Resource Worker in your county to begin! As well as being involved in Local Authority Committees, PPNs are active in their community. Many PPNs co-ordinate grants from LCDCs or Local Authorities for community groups. Because PPNs encompass the whole active community they think about the future needs of a County. They create wellbeing statements which set out a vision for the County for the benefit of current and future generations.

## What should Members of Dáil Éireann know about PPNs?

**PPNs are there to help!** They are an existing network, staffed and funded, that strengthen the community's ability to be involved in local decision making and even policy creation.

**They provide a link** between local government and thousands of community groups and local associations across the country. They enable community groups to participate in Local Authority committees. Every community group in the county is encouraged to join their PPN.

**PPNs are organised into three area of societal needs:** Environment, Social Inclusion, and Community and Voluntary. They are organised from the bottom up. Rather than being told what to do from top down, they are run by the local groups themselves. However the PPN is where bottom up and top down can meet and mingle.

**PPNs are connected throughout the country** and often work together on regional community networking events, sharing successes and tips to replicate these, and sharing best practice.

**PPNs and PPN Representatives have had many successes** over the years. They have progressed motions for policy creation at local level, engaged with community groups on important consultations, and provided community groups with vital information to help them to fully take part in local decision making. PPNs have created successful Wellbeing Statements that reflect the desires the community have for their future. They have collaboratively created strategies for their county, such as Clare PPN's 'Towards an Anti-Poverty Strategy'. They have also fed into national documents such as the 'National Biodiversity Action Plan', and 'A Guide for Inclusive Community Engagement'.

**They have a large diversity of groups to confer with** and have been successful in enabling Local Authorities to take all appropriate steps to consult with and promote effective participation of local communities in local government.

